

Indaver Rivenhall IWMF DCO

Planning Act 2008

Infrastructure Planning (Applications: Prescribed Forms and Procedure)

Regulations 2009

REPORTS [PINS Ref: EN0101038]

CONSULTATION REPORT APPENDIX A - INFORMAL, PRELIMINARY AND NON- STATUTORY ENGAGEMENT

Document Reference: EN0101038/APP/5.2

Revision Number 1.0

APFP Regulation 5(2)(q)

November 2023
Indaver Rivenhall Ltd

Leading the field in
sustainable waste
management.



Consultation Report

Appendix A: Informal, Preliminary and Non-Statutory Engagement

Appendix A-1: Non-statutory consultation materials	Page
▪ Site Liaison Group meeting slides (December 2022)	2
▪ Site Liaison Group meeting slides (March 2023)	11
▪ Local Authority meeting slides (April 2023)	16
▪ Meeting with the Planning Inspectorate (August 2023)	24
▪ Site Liaison Group meeting slides (October 2023)	33



Quod
Rivenhall IWMF Extension
Site Liaison Committee

08 December 2022
Version 1.0

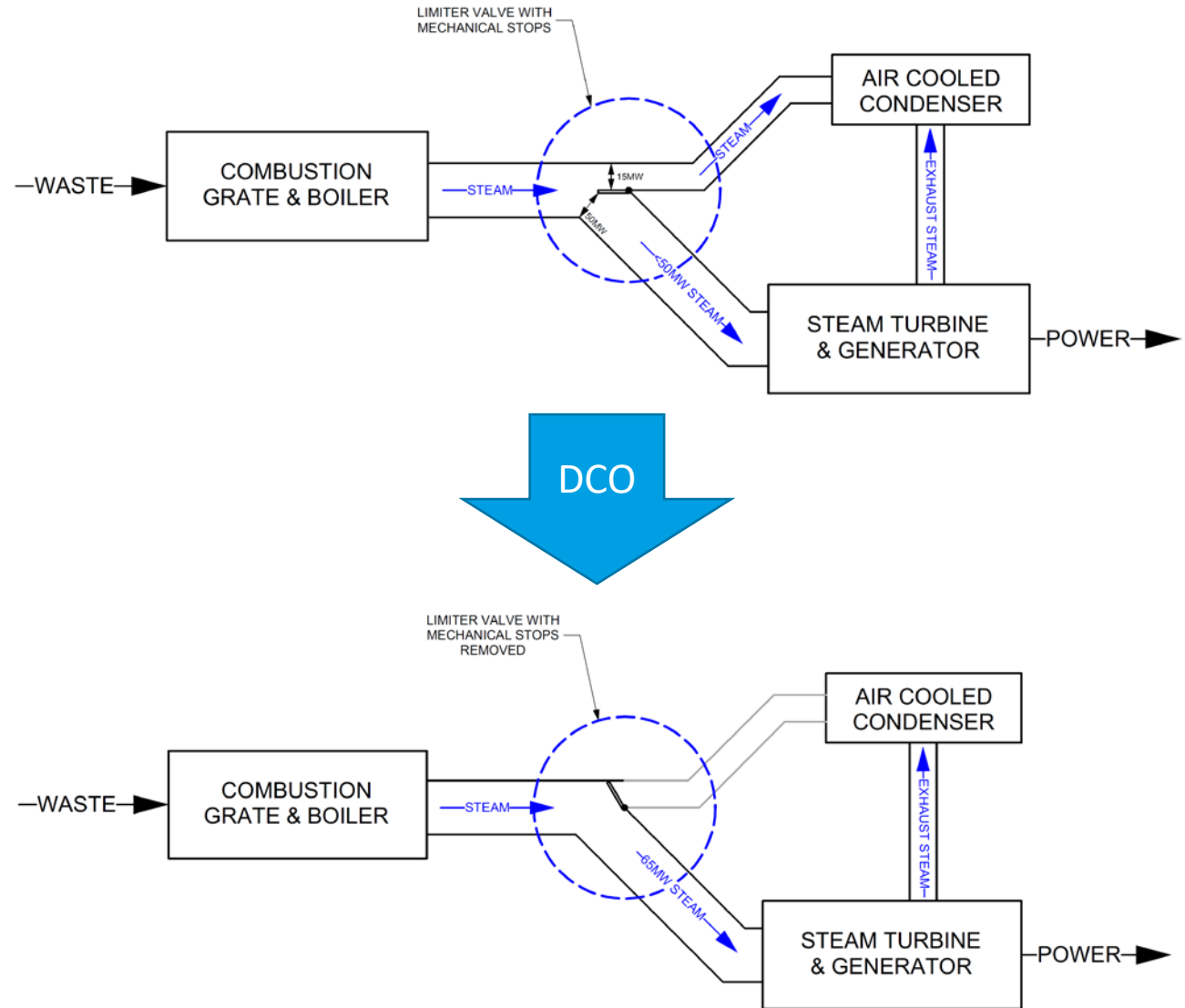
What is the application for?

The Rivenhall IWMF includes a turbine that powers a generator that produces electricity.

Since planning permission was first issued in 2008, technology has improved significantly. It is now possible to generate more energy using the same input just by utilising the more efficient plant and machinery.

To ensure that the facility operates within the limits of its permission, the plant will be installed with a limiter that will cap the energy output to below 50MW.

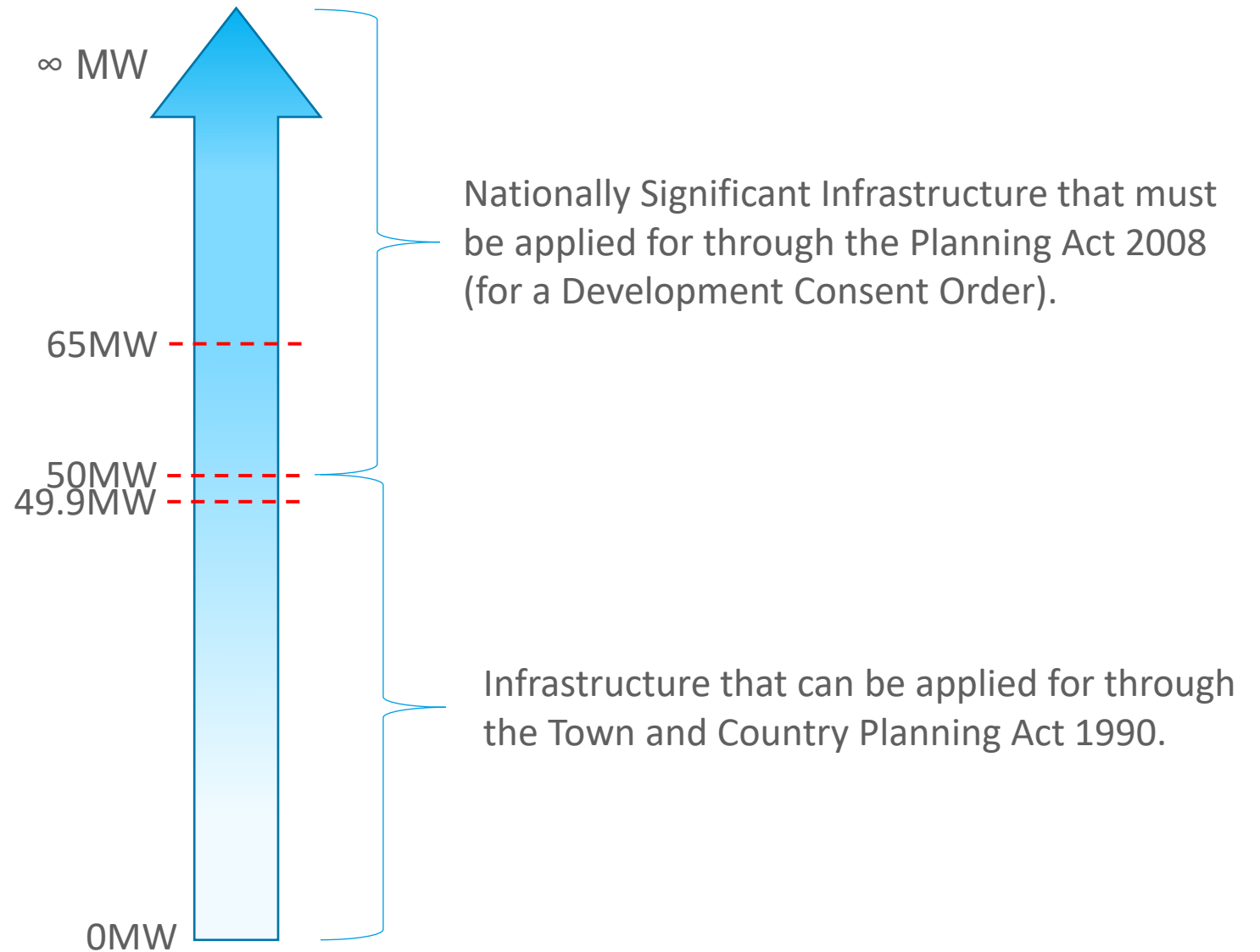
The DCO application will seek consent for the removal of that limiter.



Background – Need for a DCO

The Rivenhall IWMF has planning permission that allows it to generate up to, but not more than, 50 megawatts of electrical power.

Indaver would like to allow the facility to generate more than 50MW. This will require a Development Consent Order.



Process

Informal engagement with the Site Liaison Committee, ECC/BDC and the Planning Inspectorate (PINS)

Consult on the SoCC and informal engagement with local stakeholders

Submit application to PINS

Pre-examination

Decision

Stage 1 consultation

Stage 2 consultation

Submission and examination

EIA Scoping

Formal consultation

Decision on acceptance

Examination

Post-Decision

Non-statutory consultation

- Continue to engage with the SLC on a regular basis.
- Engage directly with relevant LAs and other key local, political, commercial and statutory stakeholders.
- Engage with PINS.
- Agree the SoCC – extent, type and format of consultation with the public and stakeholders.
- Identify any ‘hard to reach’ groups that might need more bespoke engagement.



Formal Consultation

Community consultation will run for **6 weeks**.

Individuals, businesses and organisations within the 'consultation zone' will be notified directly by a **Consultation letter** delivered to their address.

Newspaper notices will also be placed in local, regional and national newspapers.

Consultation material will be available on the **Rivenhall IWMF website**.

Copies of the consultation materials will be available at agreed locations (see next slide).

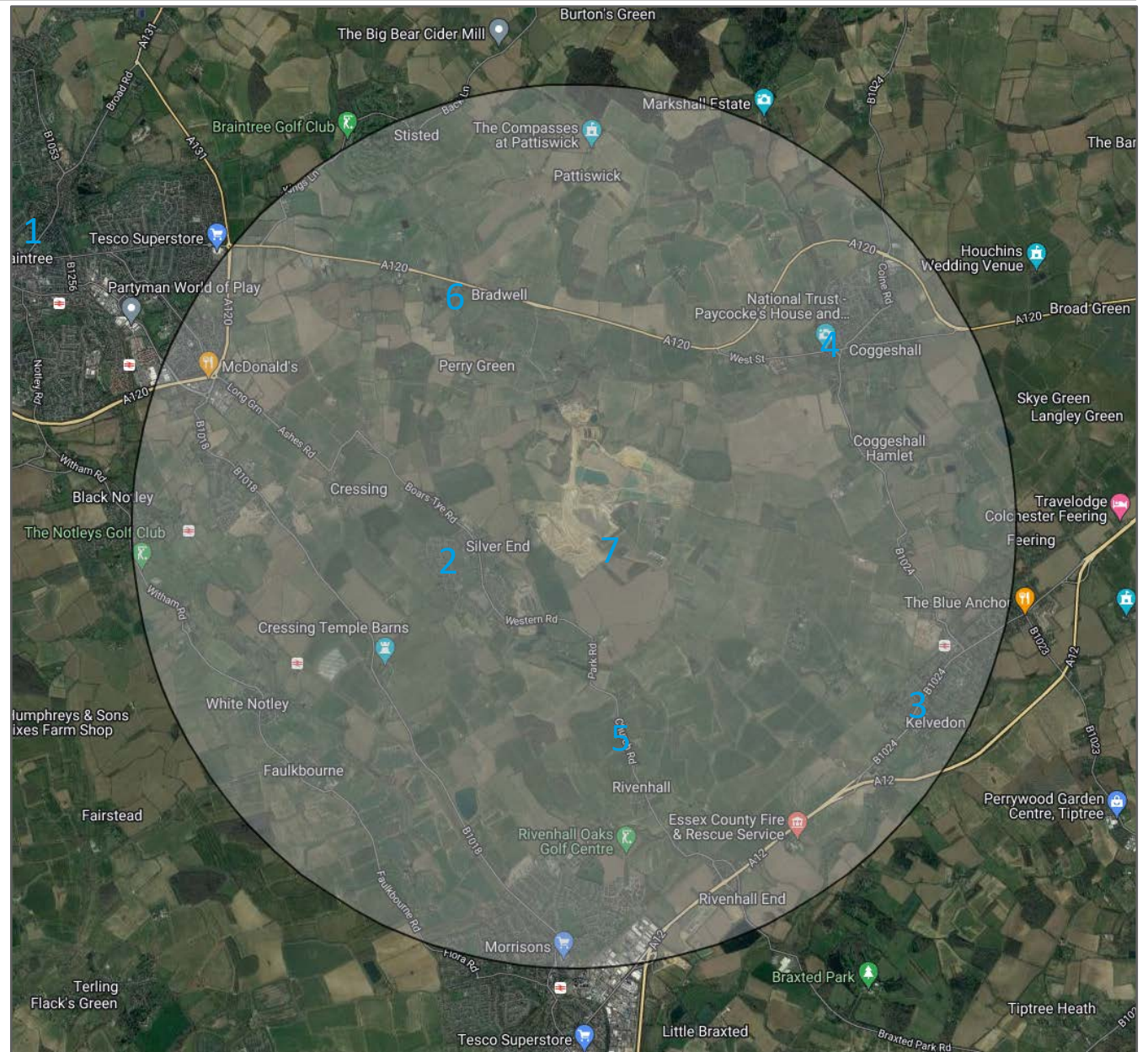
Feedback can be made via the Rivenhall IWMF website or directly via post, email, telephone, or in person at the Rivenhall IWMF Information Hub.

'**Drop in**' consultation event to be hosted at one or more venue(s) across multiple times (1 weekday evening and 1 weekend daytime).



Venues for public exhibitions and for viewing hard copies of the consultation material

No.	Location	For public exhibition	For locating hard copies
1	Braintree District Council Offices	✓	X
2	Silver End Village Hall and Library	✓	✓
3	Kelvedon Hall and Library	✓	✓
4	Coggeshall Village Hall	✓	X
5	Oak Stores	X	✓
6	Bradwell Village Hall	✓	X
7	Rivenhall IWMF Information Hub	X	✓



Questions and answers



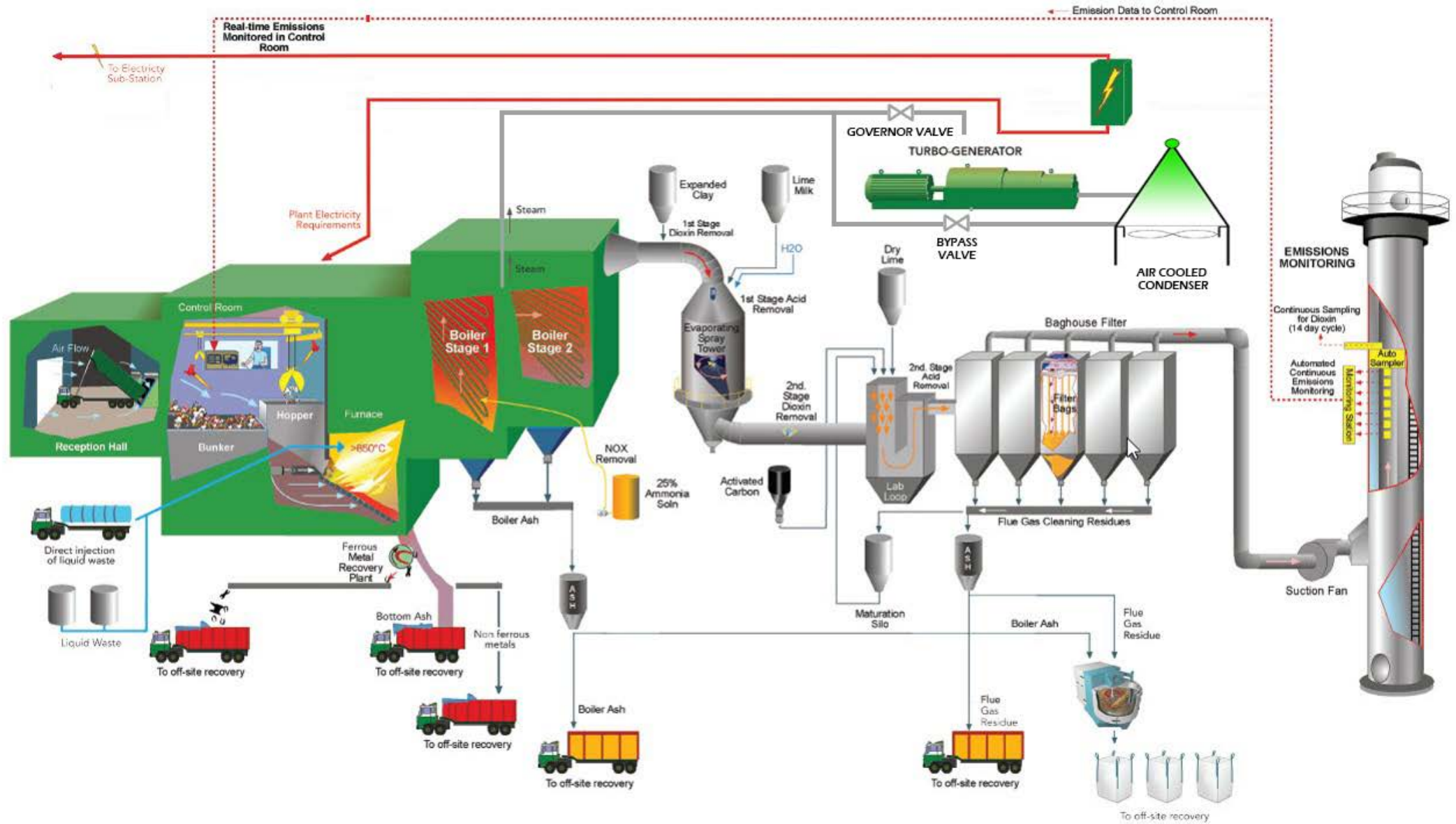
Quod



Quod

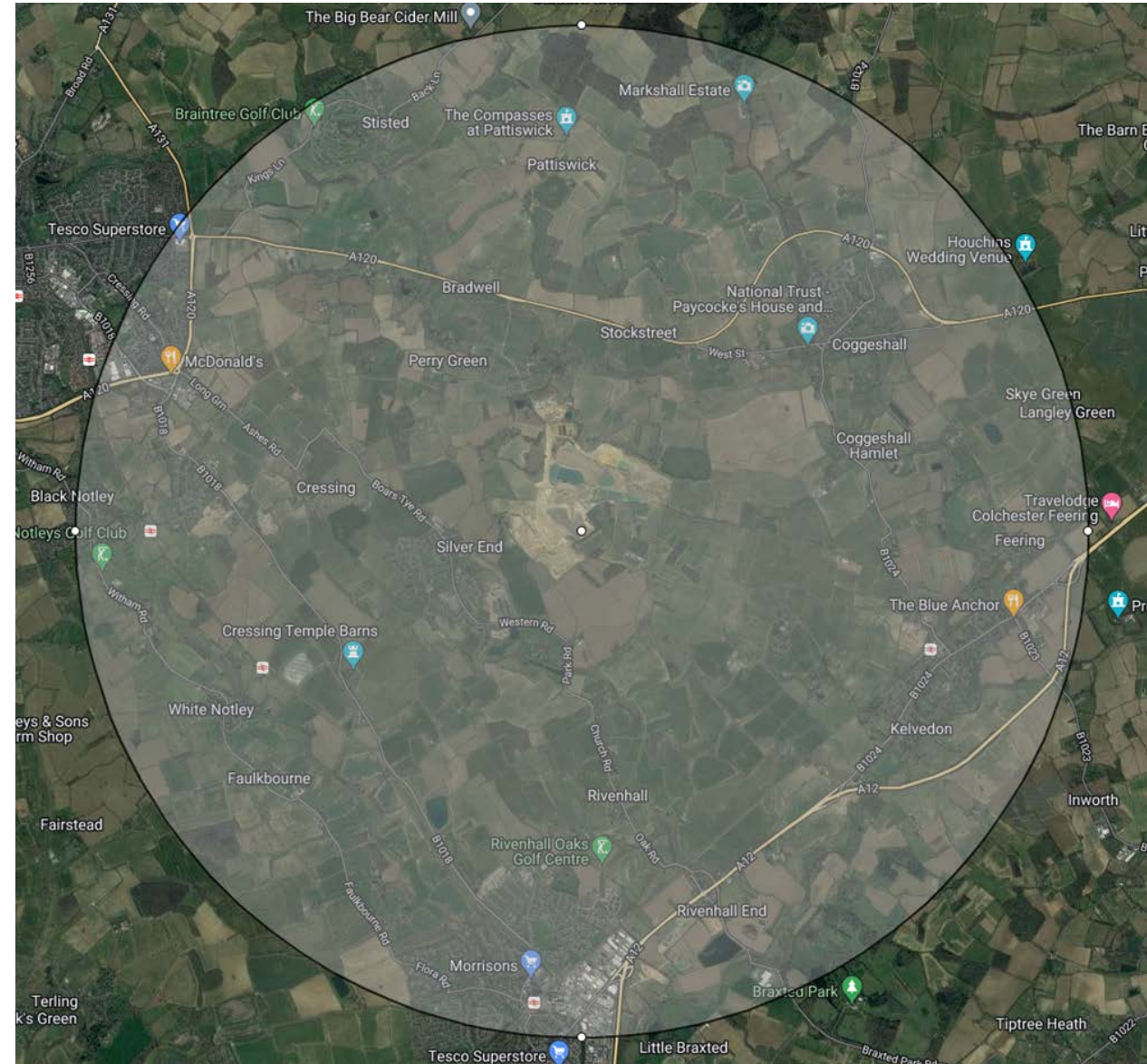
Rivenhall IWMF and Energy
Centre - Meeting with the Site
Liaison Committee

16 March 2023

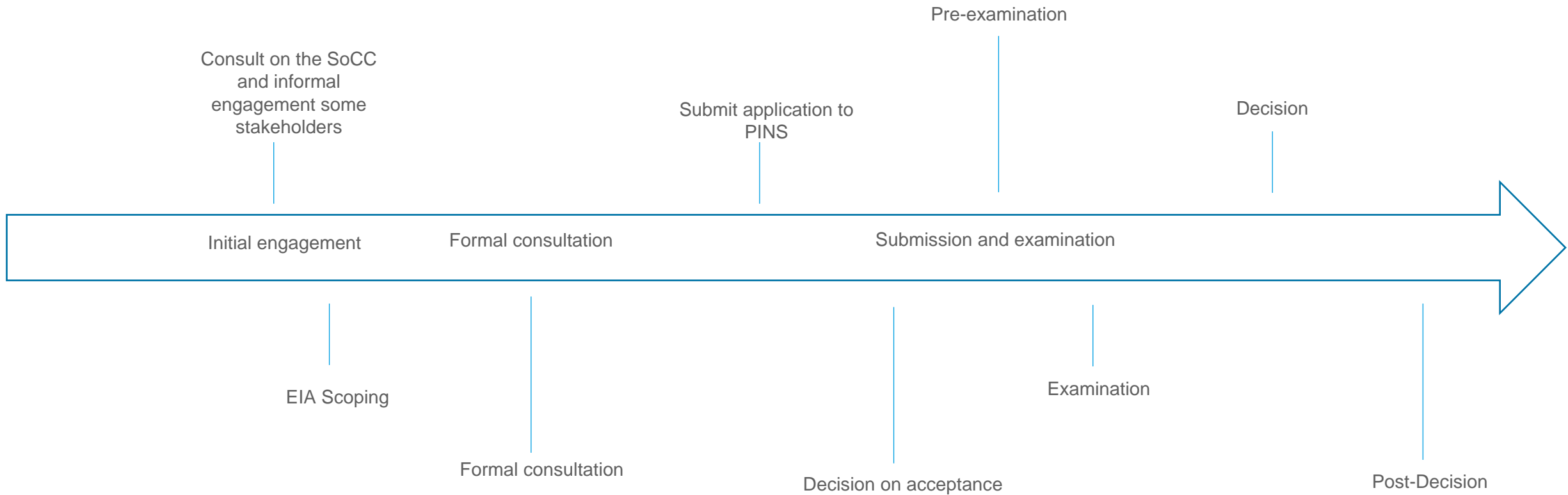


Approach to Consultation

- Community consultation will run for 8 weeks, starting in Q2 2023.
- Deposit locations: Braintree Council's office, Silver End Library, Kelvedon Library, Oak Store, Coggeshall Library, Witham Library and the visitor centre.
- Exhibition venues: Silver End Village Hall, Rivenhall Village Hall, Kelvedon Hall and Coggeshall Village Hall. Webinars and attendance at meetings will also be held, upon request.
- Consultation materials to include: newsletter, non-technical summary, preliminary environmental information report and other materials.



Key Milestones





Quod



Quod
Rivenhall IWMF and Energy
Centre
Agenda slides

11 April 2023
Version 1.0

Agenda

- Project update
- SoCC & PPA
- EIA Scoping
- Programme look ahead
- Review of actions

SoCC and PPA

- Statement of Community Consultation
 - Consultation runs until 02 May 2023.
 - Comments received from ECC.
 - Point of discussion is the project name.
- PPA
 - Draft PPA issued to ECC using the County's template.
 - Feedback received from ECC (thank you).
 - Awaiting first draft of a PPA from BDC.

EIA Scoping

- Scoping Request and Report has been prepared on the basis of the approach previously discussed.
- Summary of approach to the EIA Scoping Report:

Chapter No.	Technical Topics	Future Baseline	Proposed Development Operation	Scope Topic In / Out
7	Climate Change and Greenhouse Gases	Determine conditions with consented scheme using latest methods	Assess impact of incremental 15Mwe	Scope in
8	Noise	Determine conditions with consented scheme using latest methods	Model noise emissions to demonstrate impacts	Scope in
9 Topics Scoped Out				
	Air Quality	No change	No change	Scope Out
	Land Use and Contaminated Land	No change	No change	Scope Out
	Ground and Surface Water (and Flood Risk)	No change	No change	Scope Out
	Ecological Impact and Ecological Risk Assessment	No change	No change	Scope Out
	Landscape and Visual Impacts	No change	No change	Scope Out
	Archaeology and Cultural Heritage	No change	No change	Scope Out
	Travel and Transport	No change	No change	Scope Out
	Social and Community Issues	No change	No change	Scope Out
	Nuisance Impact Assessment (air emissions, dust, bioaerosols, odour, litter, insects, vermin and birds and light pollution)	No change	No change	Scope Out
	Human Health	No change	No change	Scope Out
	Waste and Materials	No change	No change	Scope Out
	Vulnerability to Major Accidents and Disasters	No change	No change	Scope Out
	Aviation	No change	No change	Scope Out
	Energy and Utilities	No change	No change	Scope Out
	Electromagnetic Fields	No change	No change	Scope Out
	Telecommunications	No change	No change	Scope Out

Programme look ahead

Action	April				May				June				July				Aug				Sept				Oct				Nov			
Week	1	2	3	4	1	2	3	4	1	2	3	4	1	2	3	4	1	2	3	4	1	2	3	4	1	2	3	4	1	2	3	4
EIA Scoping		■	■	■	■	■																										
Public Consultation											■	★	■	■	■	■	■															
Application preparation																	■	■	■	■	■	■	■	■	■							
Submission																													■			

★ = public exhibitions

Consultation materials

- S47(6) and S48 newspaper notices
- SoCC
- Community newsletter
- Exhibition panels
 - Who we are
 - About the site
 - About the IWMF
 - The Proposed Development
 - Next steps
- PEIR (& NTS)



Review of actions

- BDC to provide comments on the SoCC.
- BDC to provide a first draft of the PPA.
- Indaver to update SoCC and PPAs in light of LA comments.
- Indaver to share some of the consultation materials by end of April for discussion at next LA meeting.
- Indaver to issue stakeholder list to LAs.



Quod



Quod
Rivenhall IWMF DCO
(EN010138)
Meeting with PINS

14 August 2023
Version 1.0

Agenda

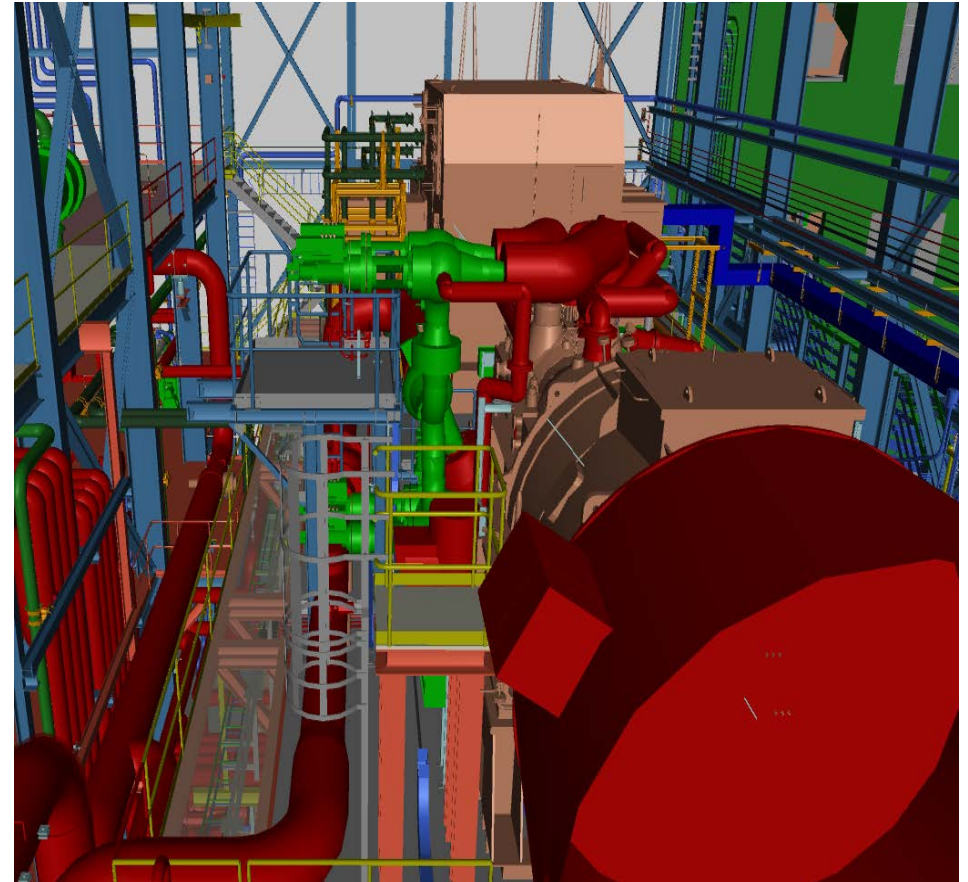
- EIA Scoping Opinion
- Scope of the proposed development (the HSF note)
- Matters arising from the consultation
- Next steps and timescales, including dates for PINS' review of some draft documents
- Any matters from PINS
- Any Other Business

EIA Scoping Opinion

- Opinion issued 6 June 2023
- **SCOPED IN:**
 - Climate Change and GHGs
 - Noise
 - Vibration scoped in alongside noise
 - Efficiency of the steam turbine
- ECC Scoping Response queries
 - Order limits – why is the order limits not just confined to energy generation plant itself rather than including the whole of the plant area and building?
 - Which permission will take primacy between the planning permission and the DCO?
 - What will the WPA's role be if the LPA is responsible for enforcing a DCO?

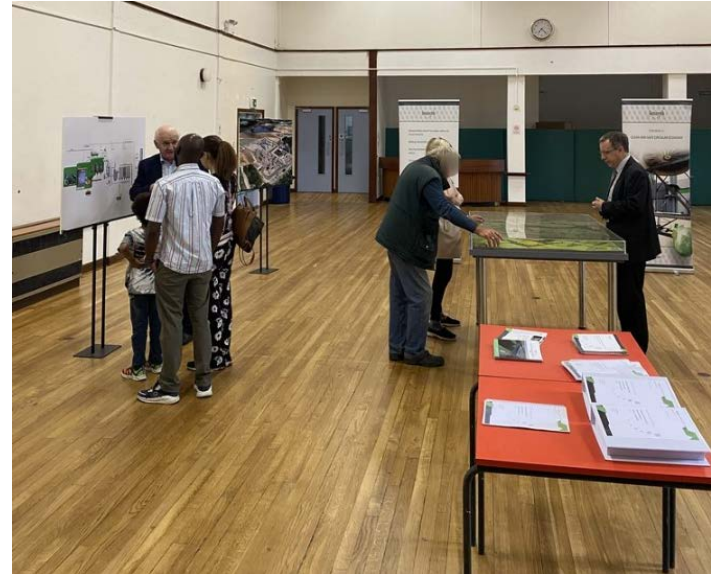
Scope of the Proposed Development

- *Work No.1 – an extension to the Rivenhall Integrated Waste Management Facility with the effect that, once extended, the extended waste management facility will have a gross installed generating capacity of up to 65MW, comprising the following works -*
 - (a) *mechanical modifications to the actuated steam turbine inlet control valve to allow steam capacity to be increased.*
- *Work No.2 – an extension to the [Rivenhall Integrated Waste Management Facility] with the effect that, once extended, the extended waste management facility will have a gross installed generating capacity of up to [65MW], comprising the following works –*
 - (a) *installation and commissioning of unrestricted governor valves with a capacity of up to [65MW]*
- The precise nature of the capacity increase works would depend on the timing of a DCO being granted; and the status of the plant constructed under the 2016 Permission at that date.
- The works carried out would be ‘*engineering operations*’ (PA2008, s.31 and 32) that would have the effect of extending a generation station (PA 2008, s.14 and 15).



Matters arising from the consultation

- 5 public events have now been carried out in accordance with the SoCC.
- An additional (6th) public event will be held in Witham following a request from the Town Council.
- All other activities have been carried out in accordance with the SoCC, but some individuals noting they had not received the leaflet.
- Indaver have opened up the Information Hub to those wishing to visit the site.
- Attendance at public events has varied.
- Feedback has been mixed but with a strong number of positive responses - 11 out of 16 written feedback responses received to date have been in support.
- Grounds for opposition are almost always related to the principle of the scheme granted by the planning permission, mainly in relation to:
 - opposition to the principle of the scheme;
 - concern over emissions and air quality impacts;
 - concern over traffic impacts.
- Indaver is seeking to respond directly to all comments received, and in any case, responses to issued raised through the consultation will be set out in the Consultation Report.
- The consultation closes midnight on 23 August 2023.



Next steps and timescales



Any Matters from PINS

Any Other Business



Quod

██████████@quod.com





Quod

Rivenhall IWMF - Meeting with
the Site Liaison Group

5th October 2023

Consultation overview

- 28th June to 23rd August 2023
- 6 public events, in 6 different locations
- Over 30,000 leaflets distributed
- 5 hard copy deposit locations
- 10 information hub open days
- 177 attendees at the public events and open days
- 63 responses from the public and statutory consultees



Overview of key issues raised by stakeholders

Matter raised	Response
<p>Queries over how the Proposed Development would affect the Consented Scheme, namely with regard to issues like the size of the building and the stack/chimney, and the size of the plume.</p>	<p>The Proposed Development would not result in any changes to the external appearance of the Consented Scheme, nor would there be any changes to emissions, as the quantum of waste (or vehicle movements) that the Integrated Waste Management Facility (IWMF) processes would not change. This consequently means that there would be no changes to the size of the plume compared to the Consented Scheme.</p>
<p>Concern over air quality impacts and plume visibility.</p>	<p>The Proposed Development involves no changes to the combustion of waste or the treatment of the flue gases. Exactly the same waste would be combusted and the releases to atmosphere and abatement techniques would be unchanged.</p>
<p>Request for a public event to be held in Witham during the Statutory Consultation.</p>	<p>Whilst the public event locations were agreed with ECC and BDC prior to the start of the consultation, Indaver added an additional event in Witham and took measures to publicise it to the Town's residents.</p>
<p>Concern that by allowing the EfW component of the IWMF to produce additional electricity, this will in turn allow the IWMF to burn more waste each year.</p>	<p>The Proposed Development does not require additional fuel to achieve the uplift in power. The uplift in power will be achieved due to more efficient plant being used than was previously possible.</p> <p>The total amount of waste that can be delivered to and processed by the IWMF is controlled by Condition 29 of the IWMF Planning Permission, which caps it at 853,000 tonnes per annum. The Environmental Permit (Permit Number EPR/FP3335YU; and Variation application number EPR/FP3335YU/V002) controls the allowable emissions from the stack and requires the annual waste throughput for the energy from waste plant not to exceed 595,000 tonnes per annum.</p> <p>The DCO application would not seek to alter either of these controls.</p>
<p>Concern over impacts to local highways.</p>	<p>Conditions 3 and 4 of the IWMF' Planning Permission controls the maximum number of daily heavy goods vehicle movements associated with the operation and construction of the IWMF. Condition 4 does the same for the construction of the Consented Scheme.</p> <p>There would be no change to this as a result of the DCO. Nor are smaller vehicle movements expected to change, as there would be no additional employees on the site either during construction or operation.</p>

Key issues (contd.)

PART 2 Principal powers

Development consent granted by the Order

3. Subject to the provisions of this Order, the undertaker is granted development consent for the authorised development to be carried out within the Order limits.

Authorisation of the operation of the extended generating station

4. The undertaker is authorised to operate and use the authorised development for which development consent is granted by this Order as part of the extended generating station.

Compliance with the TCPA permission and requirements

5.—(1) The TCPA permission and the requirements set out in Schedule 2 of this Order shall apply to the carrying out of the authorised development and to the operation of the extended generating station as if both were authorised by the TCPA permission, and all details, plans or other matters approved by the relevant planning authority pursuant to conditions of the TCPA permission prior to or following the date of this Order shall apply accordingly.

(2) The carrying out of the authorised development and the operation of the extended generation pursuant to this Order will not prevent the carrying out of development pursuant to the TCPA permission.

1. How would you describe your interest in the project? (Please tick as many as are appropriate)

Local resident
 Local elected representative
 Member of interest group (please specify below)
 Landowner
 Local business owner
 Other _____

2. Where did you hear about the proposal? (Please tick as many as are appropriate)

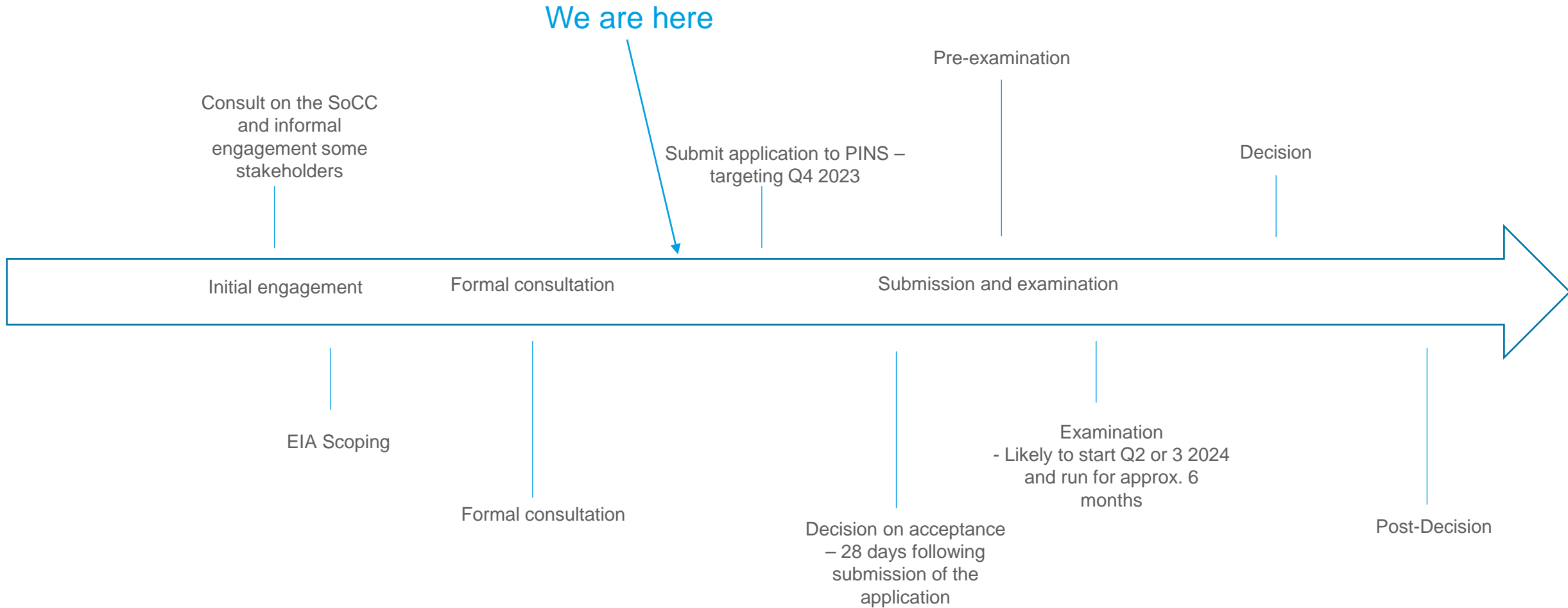
Local leaflet
 Website
 Newspaper notice
 Other _____

3. Please provide any thoughts or comments that you have about the proposal:

You Have my Full Support
 just what ESSEX needs
 to tackle climate crisis

Matter raised	Response
Concern that the DCO would supersede the TCPA permission and ECC/BDC would lose 'control' over the IWMF.	The DCO has been drafted so that the construction and operation of the IWMF will continue to be subject to the conditions and requirements attached to the Planning Permission. Therefore, ECC will continue to have 'control' over the IWMF, and other statutory bodies and Parish Councils will continue to be important consultees.
Support for the proposals	Whilst a minority, we were nonetheless glad to receive a number of responses in support of the proposals.

Key Milestones





Quod

[REDACTED]@quod.com

